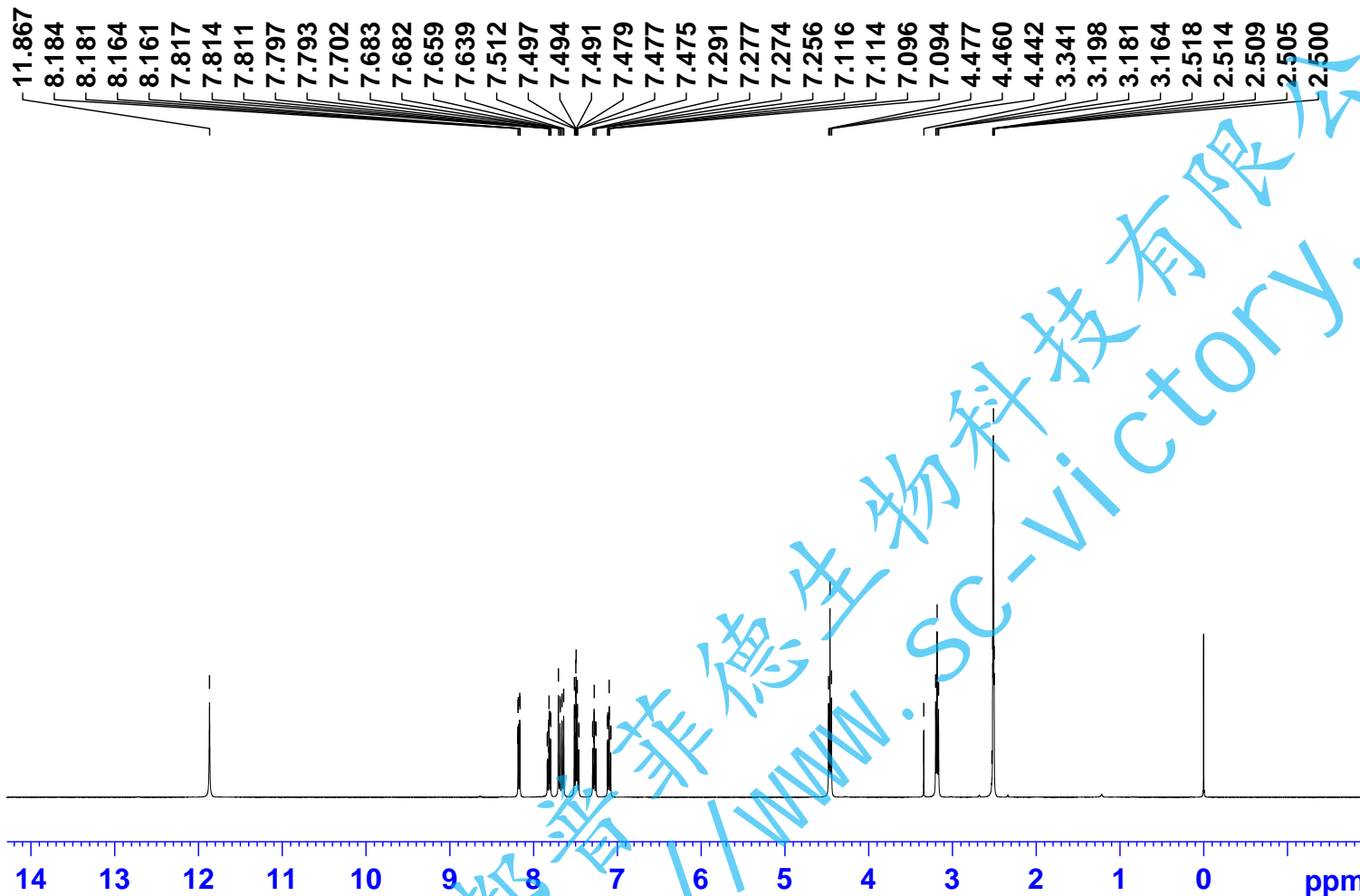


GLP62



Current Data Parameters
NAME GLP62
EXPNO 10
PROCNO 1

F2 - Acquisition Parameters

INSTRUM spect
PROBHD z116098_0564 (
PULPROG zg30
TD 65536
SOLVENT DMSO
NS 10
DS 2
SWH 8012.820 Hz
FIDRES 0.244532 Hz
AQ 4.0894465 sec
RG 70.67
DW 62.400 usec
DE 6.50 usec
TE 300.0 K
D1 1.00000000 sec
TD0 1
SFO1 400.1324708 MHz
NUC1 1H
P1 10.35 usec
PLW1 14.56099987 W

F2 - Processing parameters
SI 65536
SF 400.1299991 MHz
WDW EM
SSB 0
LB 0.30 Hz
GB 0
PC 1.00

成都普菲德生物科技有限公司
http://www.sc-victory.com

GLP62

161.07
147.85
145.76
139.15
134.87
127.57
127.06
126.91
126.43
125.38
125.20
121.19
120.41
120.20
118.33
113.04

41.29
40.64
40.43
40.22
40.01
39.80
39.60
39.39
19.41



Current Data Parameters

NAME GLP62
EXPRNO 11
PROCNO 1

F2 - Acquisition Parameters

INSTRUM spect
PROBHD z116098_0564 (
PULPROG zgpg30
TD 65536
SOLVENT DMSO
NS 73
DS 4
SWH 24038.461 Hz
FIDRES 0.733596 Hz
AQ 1.3631488 sec
RG 198.68
DW 20.800 usec
DE 6.50 usec
TE 300.0 K
D1 2.00000000 sec
D11 0.03000000 sec
TD0 1
SFO1 100.6228298 MHz
NUC1 13C
P1 10.53 usec
PLW1 69.16899872 W
SFO2 400.1316005 MHz
NUC2 1H
CPDPRG[2] waltz16
PCPD2 90.00 usec
PLW2 14.56099987 W
PLW12 0.19257000 W
PLW13 0.09686100 W

F2 - Processing parameters

SI 32768
SF 100.6127685 MHz
WDW EM
SSB 0
LB 1.00 Hz
GB 0
PC 1.40

