

Display Report

Analysis Info

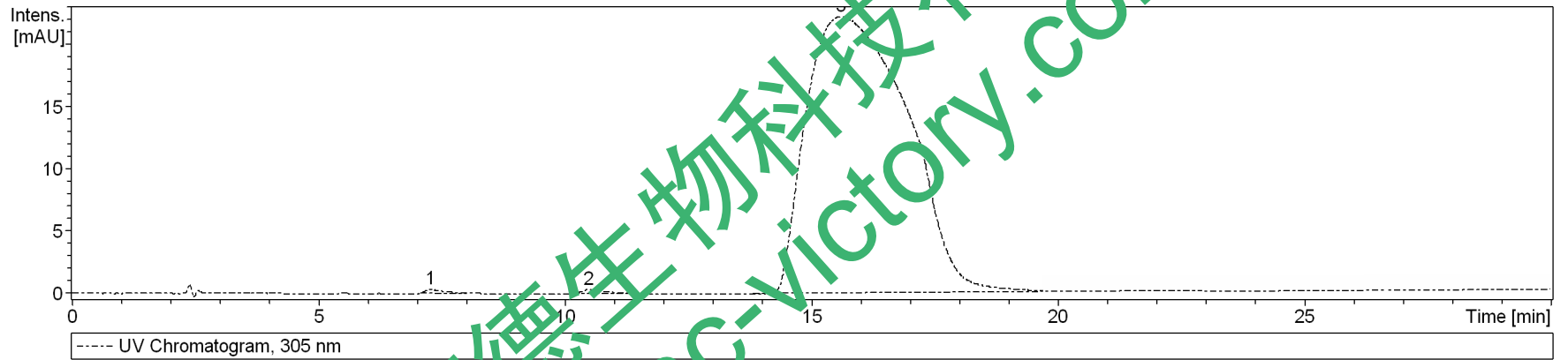
Analysis Name D:\Data\test\0713\jinquehuajian_95_01_1927.d
Method 1927.m
Sample Name jinquehuajian
Comment

Acquisition Date 7/13/2015 3:59:18 PM

Operator bruker
Instrument amaZon SL

Acquisition Parameter

Ion Source Type	ESI	Ion Polarity	Positive	Alternating Ion Polarity	on
Mass Range Mode	UltraScan	Scan Begin	70 m/z	Scan End	1000 m/z
Capillary Exit	140.0 V	n/a	n/a	Trap Drive	50.6
Accumulation Time	2280 μ s	Averages	5 Spectra	Auto MS/MS	off



#	RT [min]	Area	Height	Area Fra. %
1	7.3	8.8548	0	0.3
2	10.5	10.3791	0	0.3
3	15.6	3168.1153	22	99.4

Display Report

Analysis Info

Analysis Name D:\Data\test\0713\jinquehuajian_95_01_1927.d
Method 1927.m
Sample Name jinquehuajian
Comment

Acquisition Date 7/13/2015 3:59:18 PM

Operator bruker
Instrument ama Ion SL

Acquisition Parameter

Ion Source Type	ESI	Ion Polarity	Positive	Alternating Ion Polarity	on
Mass Range Mode	UltraScan	Scan Begin	70 m/z	Scan End	1000 m/z
Capillary Exit	140.0 V	n/a	n/a	Trap Drive	50.6
Accumulation Time	2280 μ s	Averages	5 Spectra	Aut. M/MS	off

